

WAN Ionit Server Application



Location A

DVR w/ **Server Software**
(Green icon on desktop)
192.168.1.101



1

DVR with DHCP or IP
192.168.1.102
connected to #1



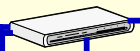
2

DVR with DHCP or IP
192.168.1.103
connected to #1



3

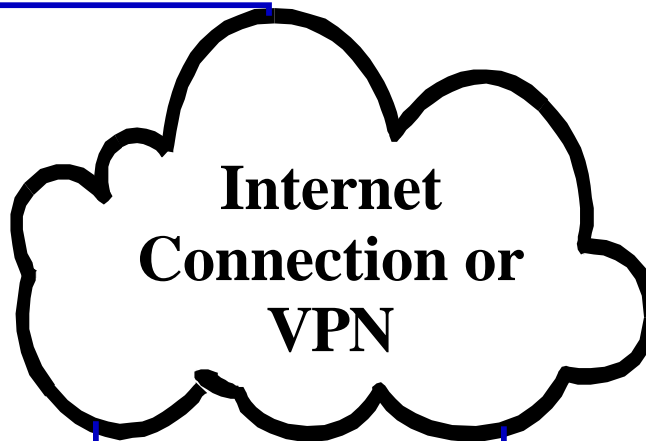
Network switch



Router / Firewall
configured for NAT
Port forwarding to DVR1



PC w/ ionit software
connected to #1
(Server Software)
via LAN



Internet
Connection or
VPN

Location C

Wire/Wireless
router



Laptop w/
ionit software



PC w/ ionit software
connected to Router IP at
Location A



Location B

DVR
DVR with DHCP or IP
192.168.1.102
connected to #1



4

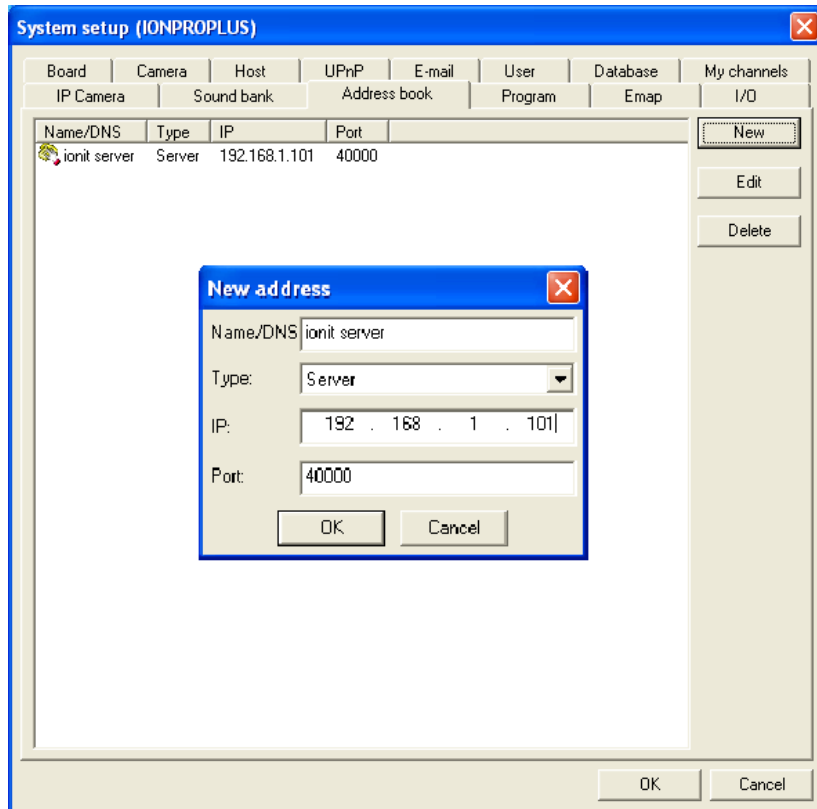
Router /
Firewall



Ionit Software setup: Set both DVR's and Remote Clients up the same way

First: setup the address book on all DVR's to point to the IP address that is running the ionit server software.

- LAN DVR's & Clients point to internal IP address
- WAN DVR's & Clients point to Router IP address at Location A



Second: click the "Link" icon to reveal this window and double click on the "Name/DNS" to get the "Status" to say "Connected". You can now see the DVR's on the "Control Panel" (right side), and playback via "File Mode".

